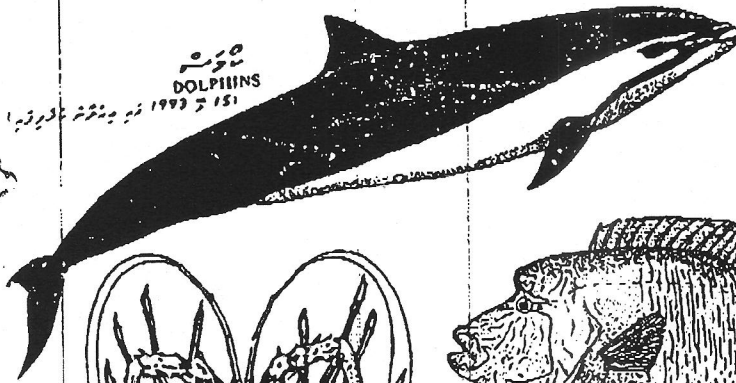


1995 1995 1995 1995
 1995 1995 1995 1995
 1995 1995 1995 1995

PROTECTED MARINE LIFE

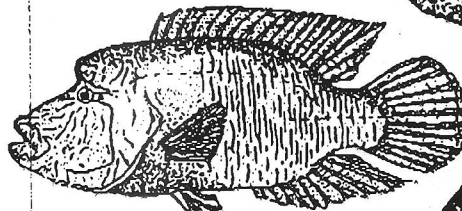
IT IS PROHIBITED TO KILL, CATCH OR EXTRACT ANY OF THE FOLLOWING WITHIN THE EXCLUSIVE ECONOMIC ZONE OF THE MALDIVES



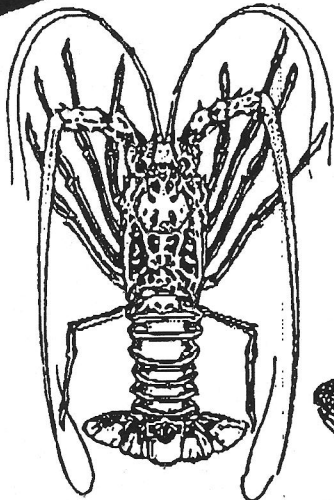
151 1993 1993
 DOLPHINS
 151 1993 1993



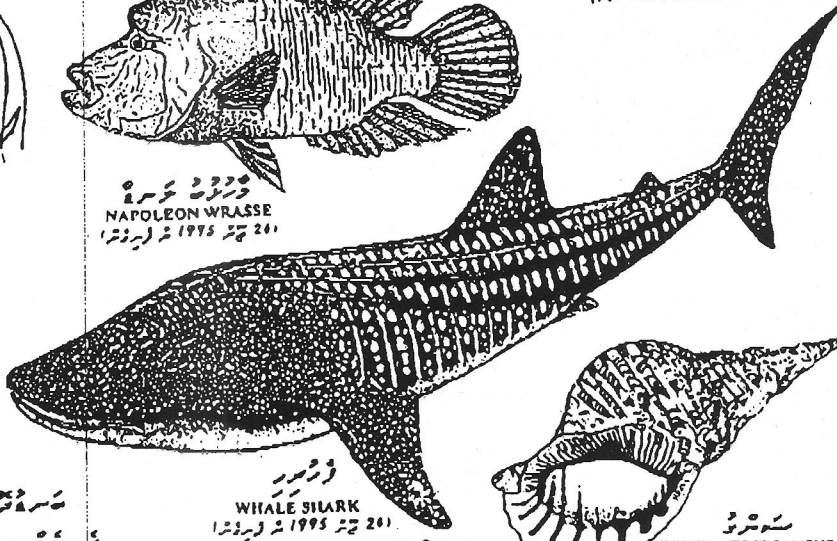
10 1995 1995
 MARINE TURTLES
 (For Ten Years From 14 June 1995)



201 1995 1995
 NAPOLEON WRASSE
 201 1995 1995



25 1980 1980
 BERRIED FEMALE LOBSTERS AND THOSE
 LESS THAN 25 CENTIMETERS IN TOTAL LENGTH
 25 1980 1980



201 1995 1995
 WHALE SHARK
 201 1995 1995



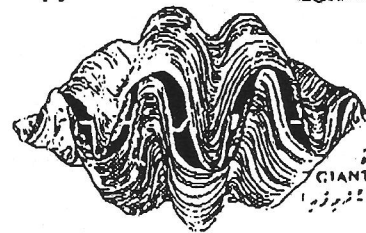
15 1993 1993
 CONCH (TRITON) SHELL
 15 1993 1993



11 1993 1993
 BLACK CORAL
 11 1993 1993



151 1993 1993
 WHALES
 151 1993 1993



151 1993 1993
 GIANT CLAMS
 151 1993 1993